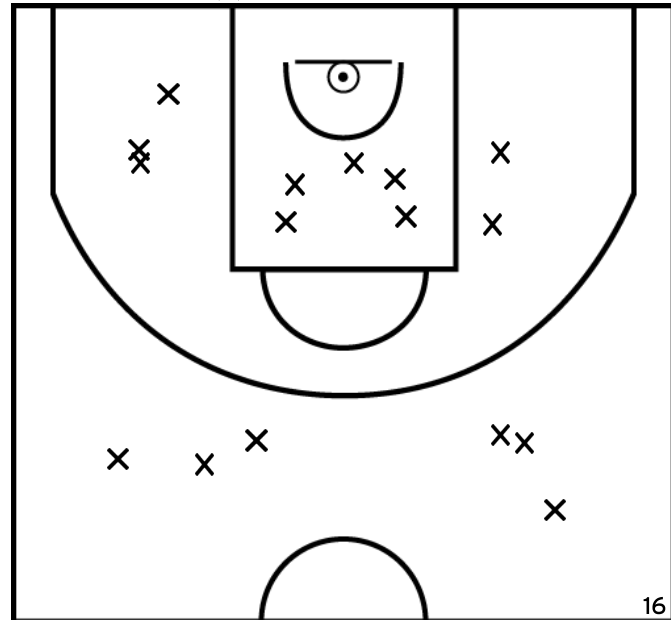


ROSIERS 42 - 47 SAINT MATHURIN SAINT REMY

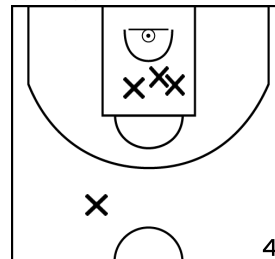
Rencontre: 7 Date: 25/09/22 Heure: 15:00

Arbitre: LAFFINEUR R GABORIEAU C

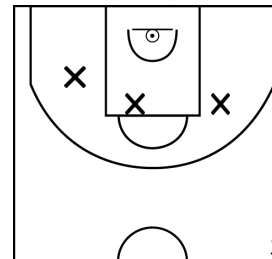
ÉQUIPE ROSIERS (A)



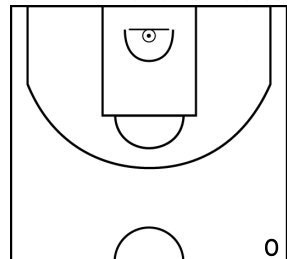
PÉRIODE 1



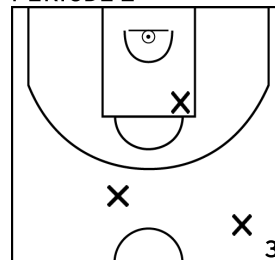
PÉRIODE 3



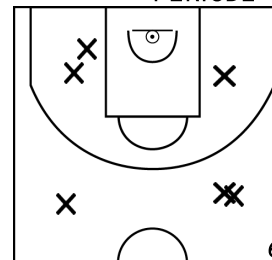
PROLONGATIONS



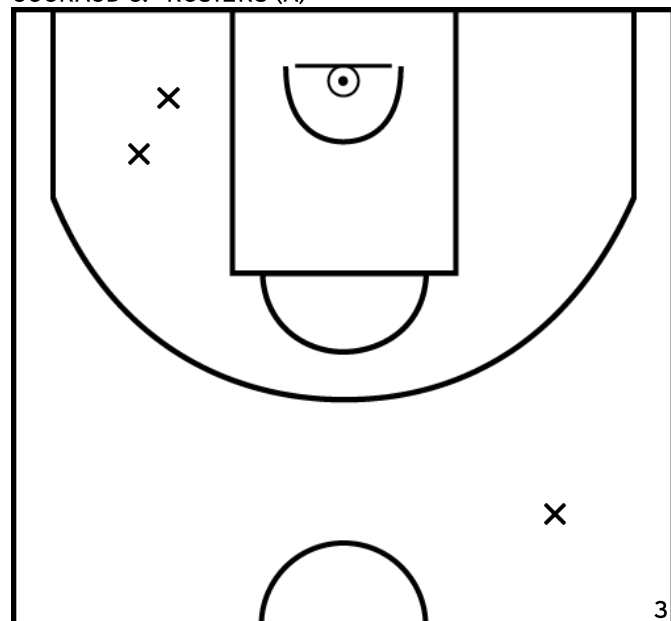
PÉRIODE 2



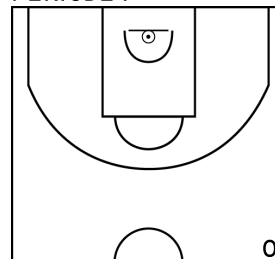
PÉRIODE 4



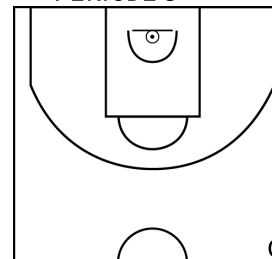
COURAUD O. - ROSIERS (A)



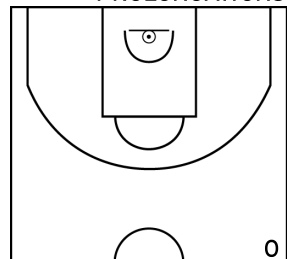
PÉRIODE 1



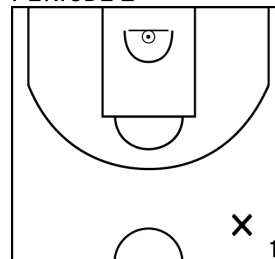
PÉRIODE 3



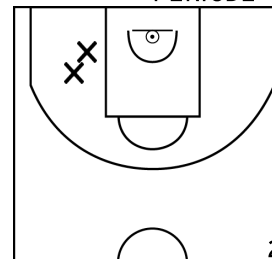
PROLONGATIONS



PÉRIODE 2



PÉRIODE 4

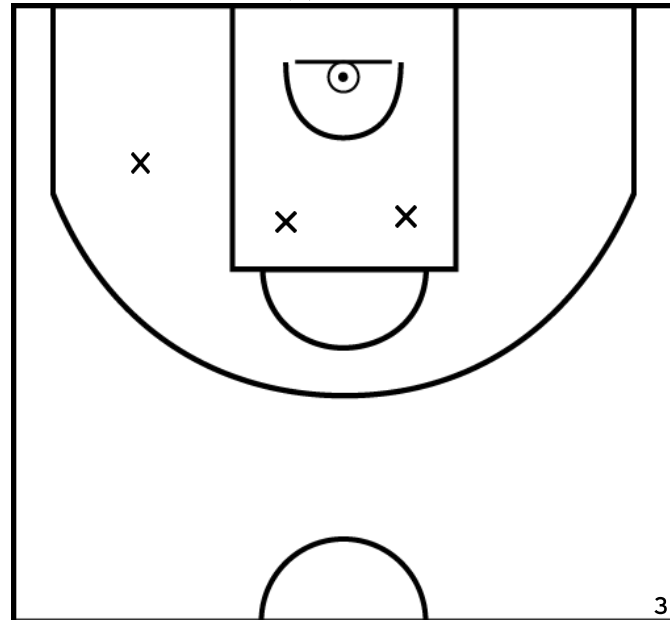


ROSIERS 42 - 47 SAINT MATHURIN SAINT REMY

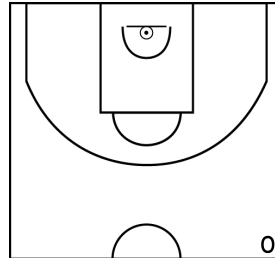
Rencontre: 7 Date: 25/09/22 Heure: 15:00

Arbitre: LAFFINEUR R GABORIEAU C

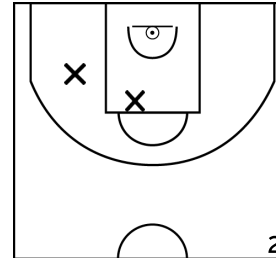
RABINEAU N. - ROSIERS (A)



PÉRIODE 1



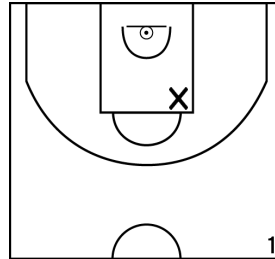
PÉRIODE 3



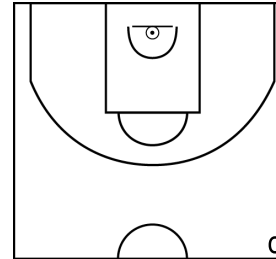
PROLONGATIONS



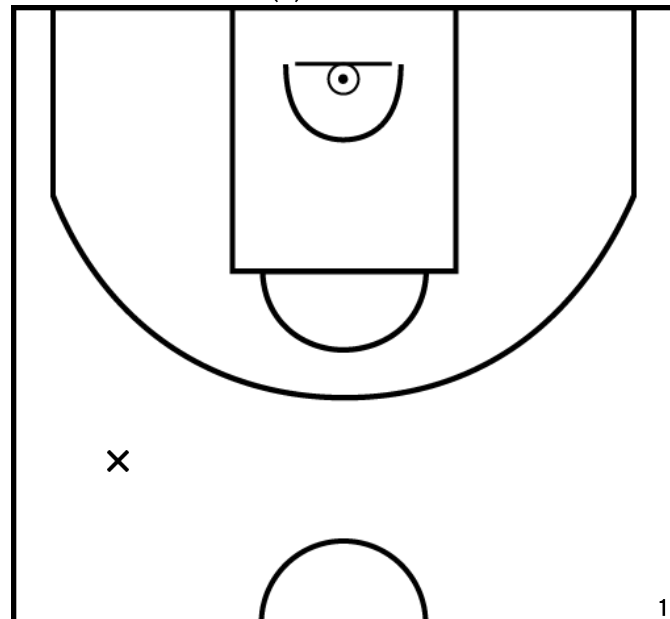
PÉRIODE 2



PÉRIODE 4



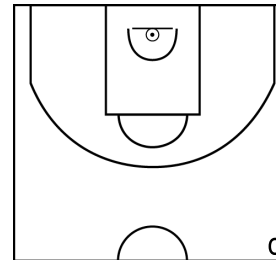
BESNARD F. - ROSIERS (A)



PÉRIODE 1



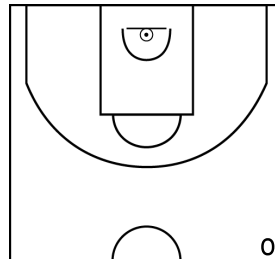
PÉRIODE 3



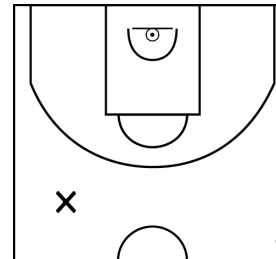
PROLONGATIONS



PÉRIODE 2



PÉRIODE 4

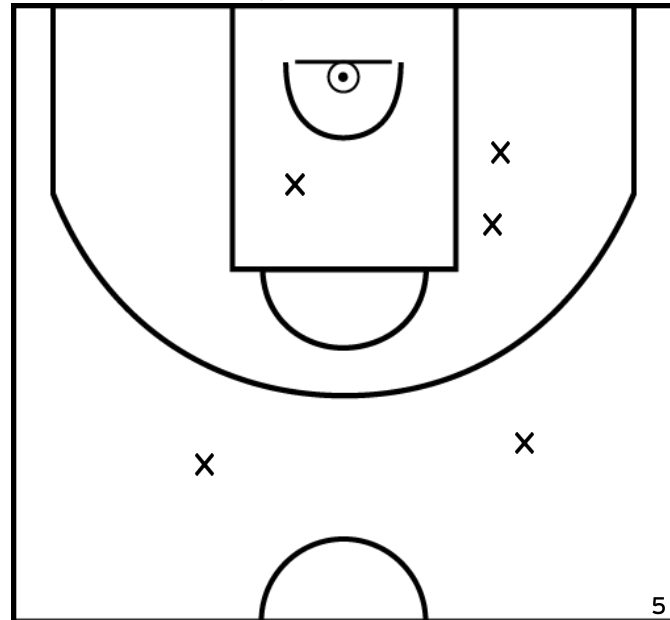


ROSIERS 42 - 47 SAINT MATHURIN SAINT REMY

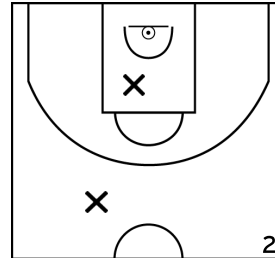
Rencontre: 7 Date: 25/09/22 Heure: 15:00

Arbitre: LAFFINEUR R GABORIEAU C

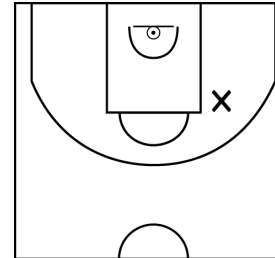
QUELEN V. - ROSIERS (A)



PÉRIODE 1



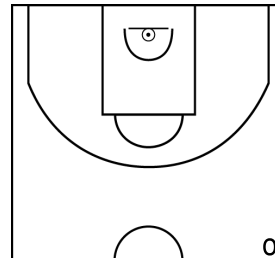
PÉRIODE 3



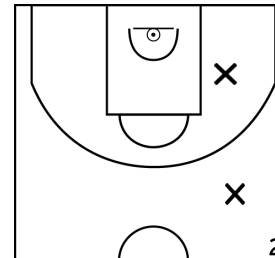
PROLONGATIONS



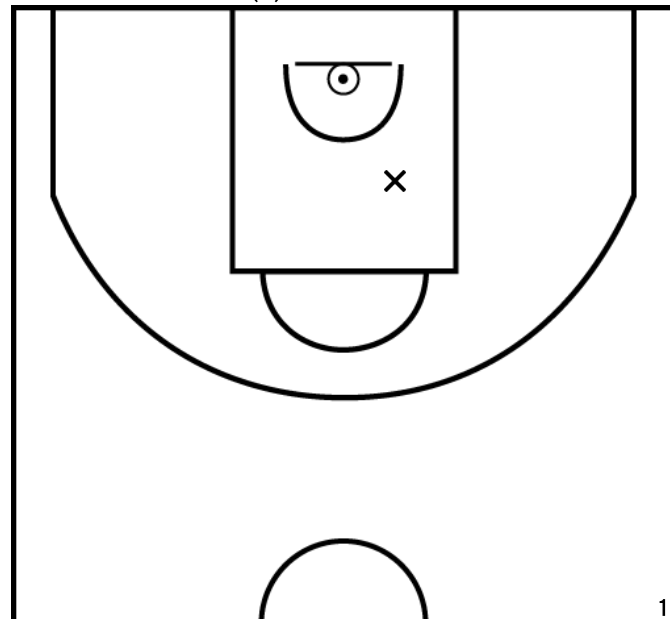
PÉRIODE 2



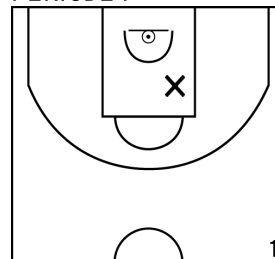
PÉRIODE 4



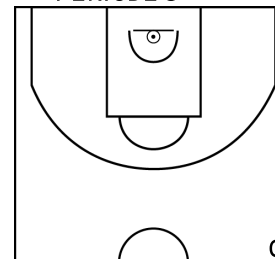
VALLEE L. - ROSIERS (A)



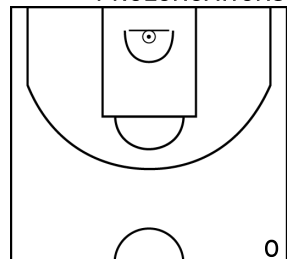
PÉRIODE 1



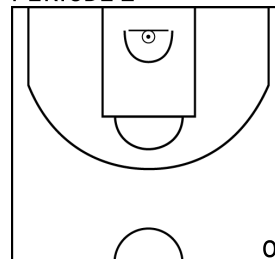
PÉRIODE 3



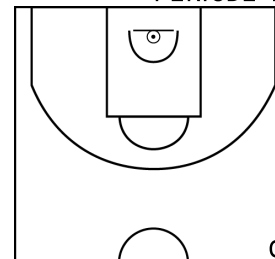
PROLONGATIONS



PÉRIODE 2



PÉRIODE 4

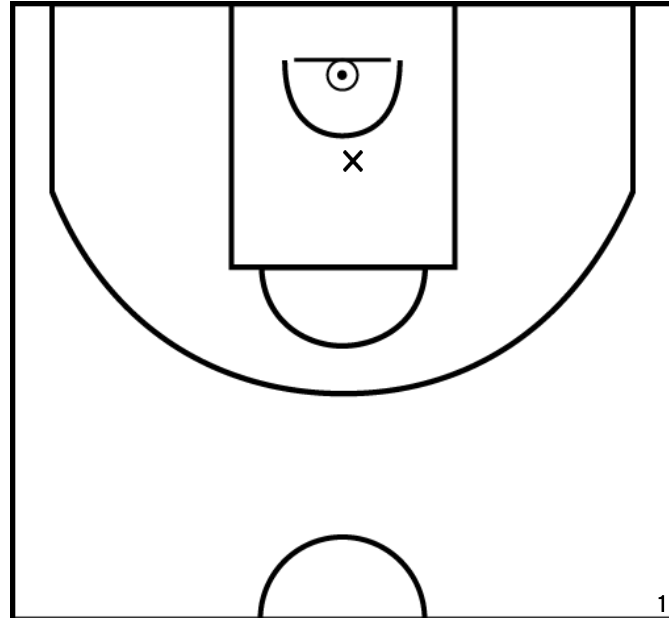


ROSIERS 42 - 47 SAINT MATHURIN SAINT REMY

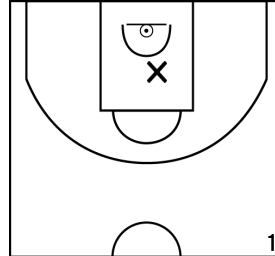
Rencontre: 7 Date: 25/09/22 Heure: 15:00

Arbitre: LAFFINEUR R GABORIEAU C

RIVIER B. - ROSIERS (A)



PÉRIODE 1



PÉRIODE 3



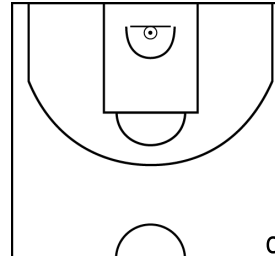
PROLONGATIONS



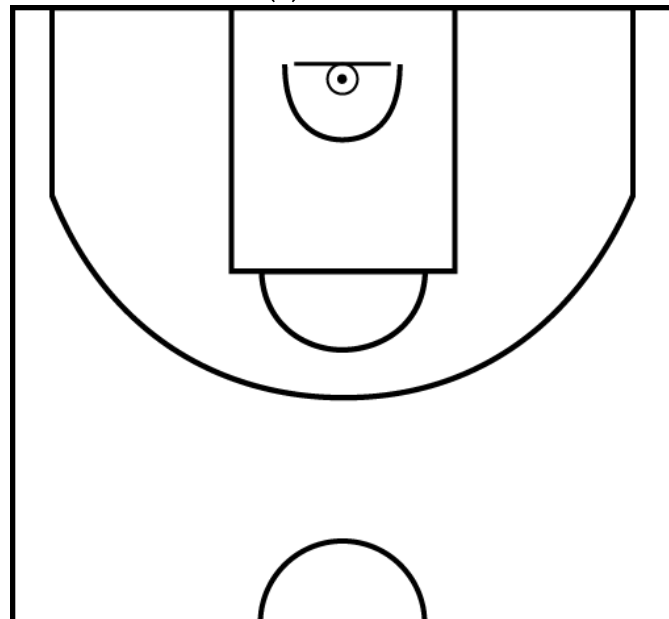
PÉRIODE 2



PÉRIODE 4



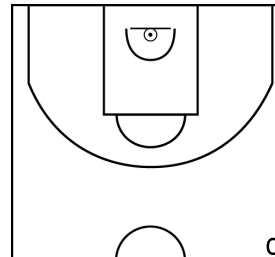
LEMOINE R. - ROSIERS (A)



PÉRIODE 1



PÉRIODE 3



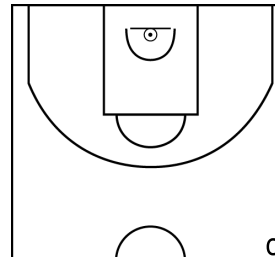
PROLONGATIONS



PÉRIODE 2



PÉRIODE 4

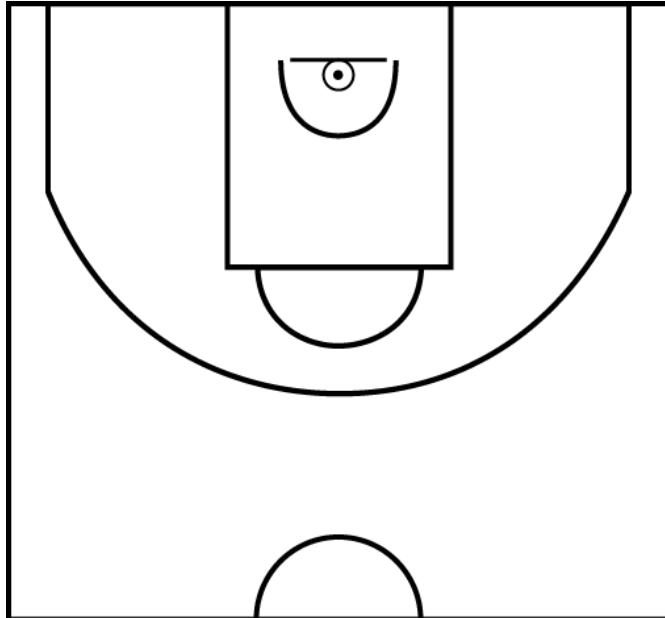


ROSIERS 42 - 47 SAINT MATHURIN SAINT REMY

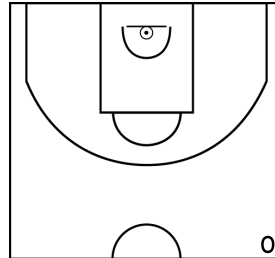
Rencontre: 7 Date: 25/09/22 Heure: 15:00

Arbitre: LAFFINEUR R GABORIEAU C

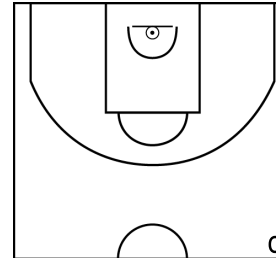
MARTIN H. - ROSIERS (A)



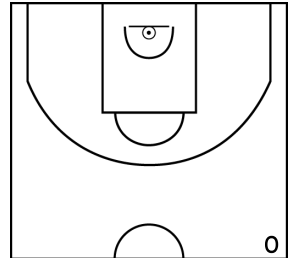
PÉRIODE 1



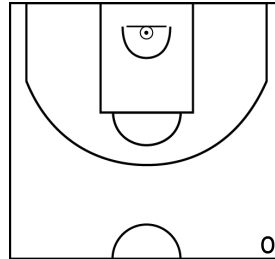
PÉRIODE 3



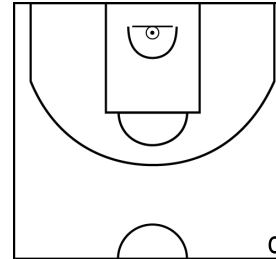
PROLONGATIONS



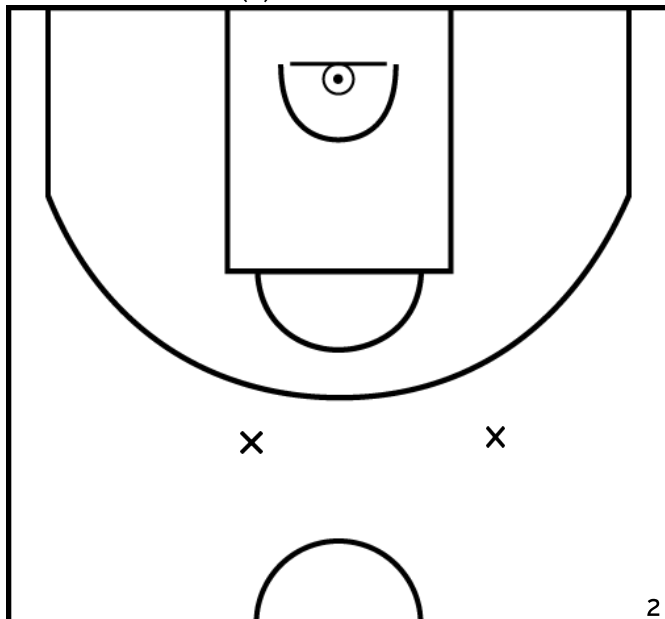
PÉRIODE 2



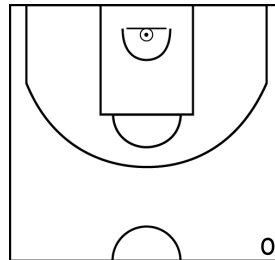
PÉRIODE 4



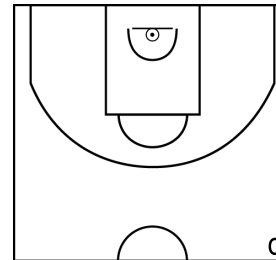
JUENIN T. - ROSIERS (A)



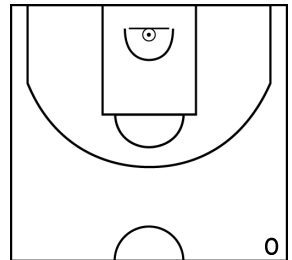
PÉRIODE 1



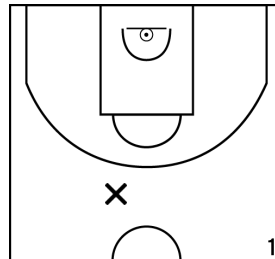
PÉRIODE 3



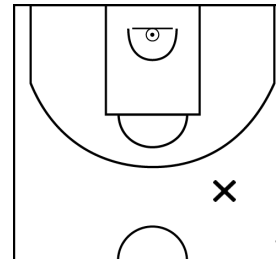
PROLONGATIONS



PÉRIODE 2



PÉRIODE 4

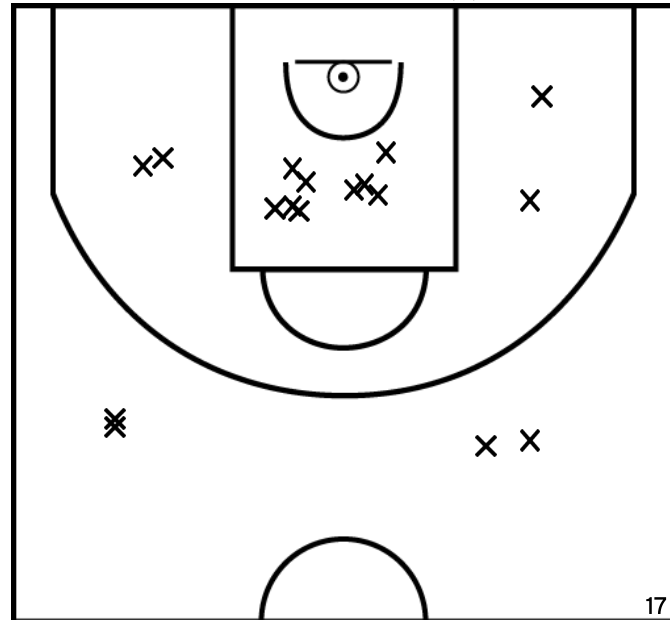


ROSIERS 42 - 47 SAINT MATHURIN SAINT REMY

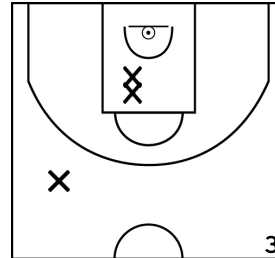
Rencontre: 7 Date: 25/09/22 Heure: 15:00

Arbitre: LAFFINEUR R GABORIEAU C

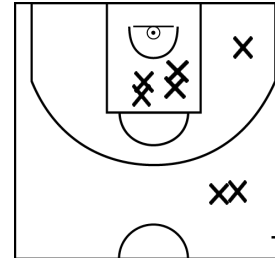
ÉQUIPE SAINT MATHURIN SAINT REMY (B)



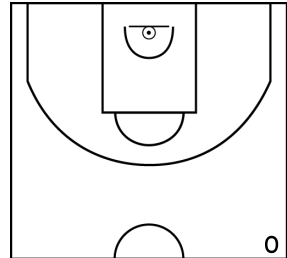
PÉRIODE 1



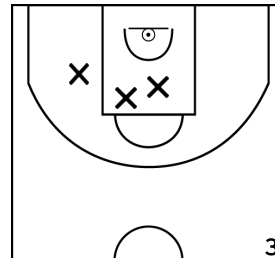
PÉRIODE 3



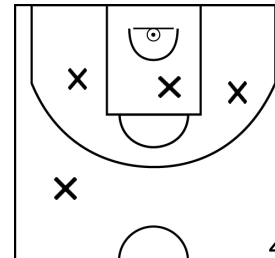
PROLONGATIONS



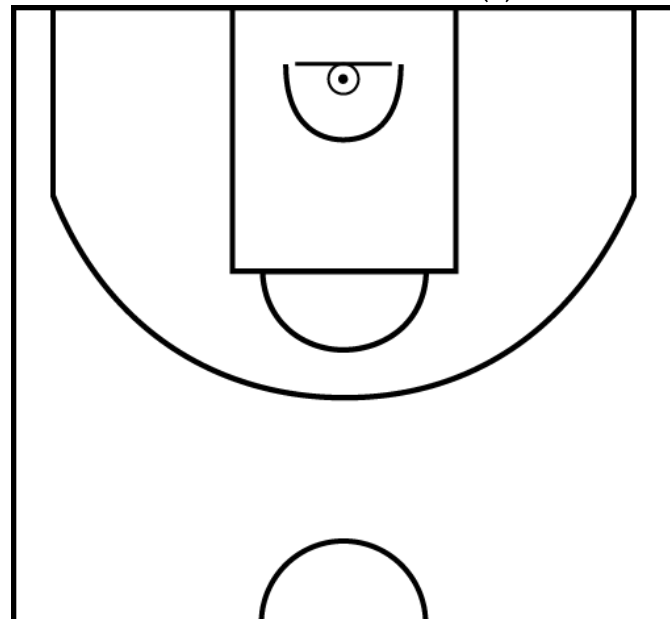
PÉRIODE 2



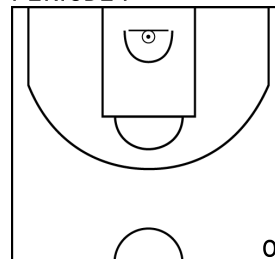
PÉRIODE 4



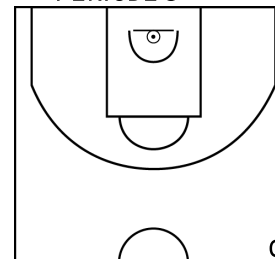
RAGAIN F. - SAINT MATHURIN SAINT REMY (B)



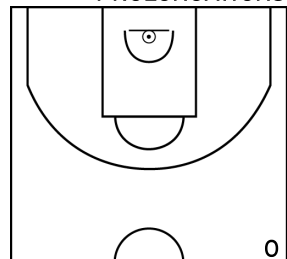
PÉRIODE 1



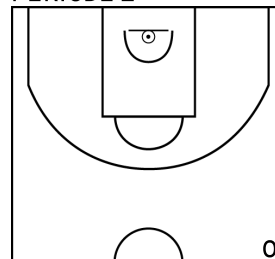
PÉRIODE 3



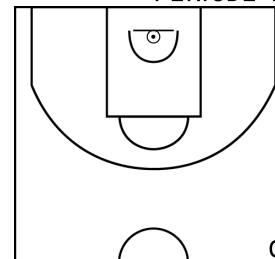
PROLONGATIONS



PÉRIODE 2



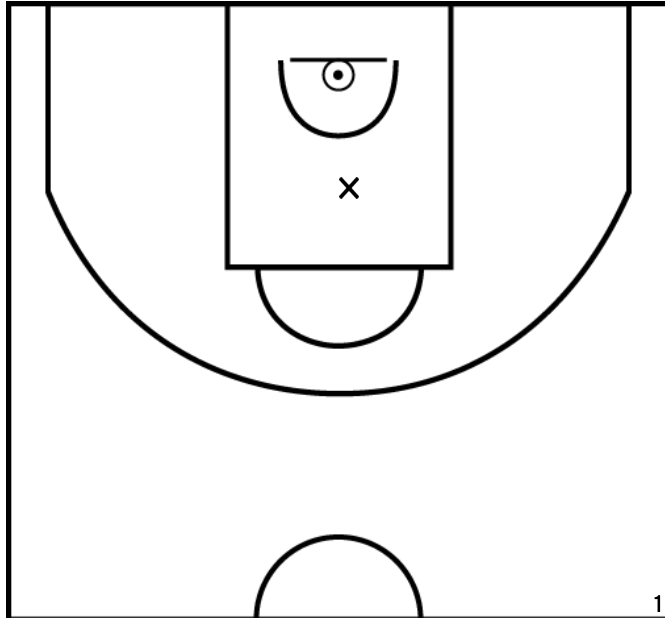
PÉRIODE 4



Rencontre: 7 Date: 25/09/22 Heure: 15:00

Arbitre: LAFFINEUR R GABORIEAU C

BEUGNET A. - SAINT MATHURIN SAINT REMY (B)



PÉRIODE 1



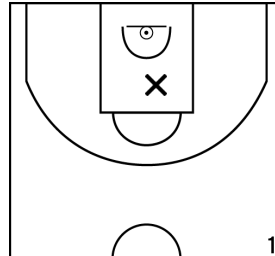
PÉRIODE 3



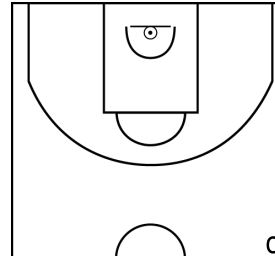
PROLONGATIONS



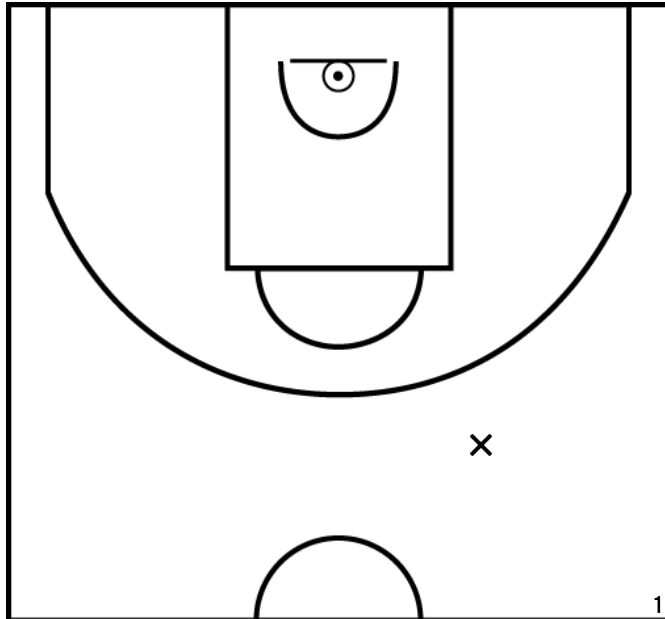
PÉRIODE 2



PÉRIODE 4



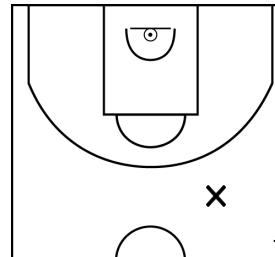
CHEVILLARD T. - SAINT MATHURIN SAINT REMY (B)



PÉRIODE 1



PÉRIODE 3



PROLONGATIONS



PÉRIODE 2



PÉRIODE 4

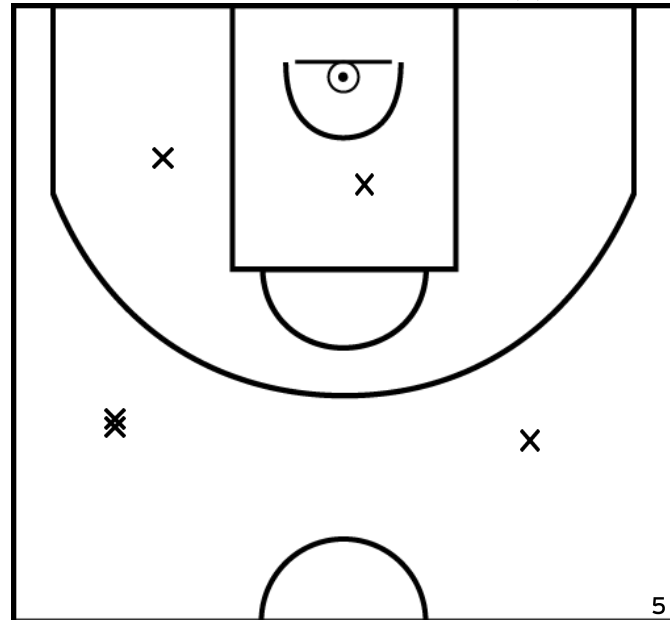


ROSIERS 42 - 47 SAINT MATHURIN SAINT REMY

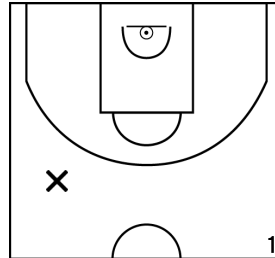
Rencontre: 7 Date: 25/09/22 Heure: 15:00

Arbitre: LAFFINEUR R GABORIEAU C

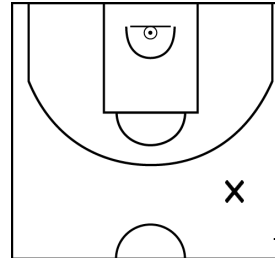
BERNARD A. - SAINT MATHURIN SAINT REMY (B)



PÉRIODE 1



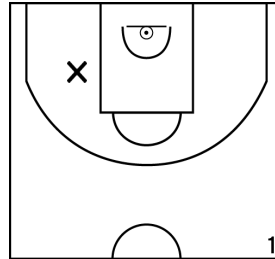
PÉRIODE 3



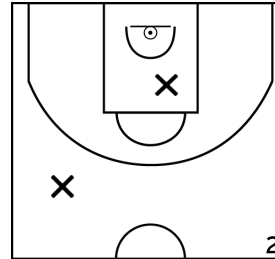
PROLONGATIONS



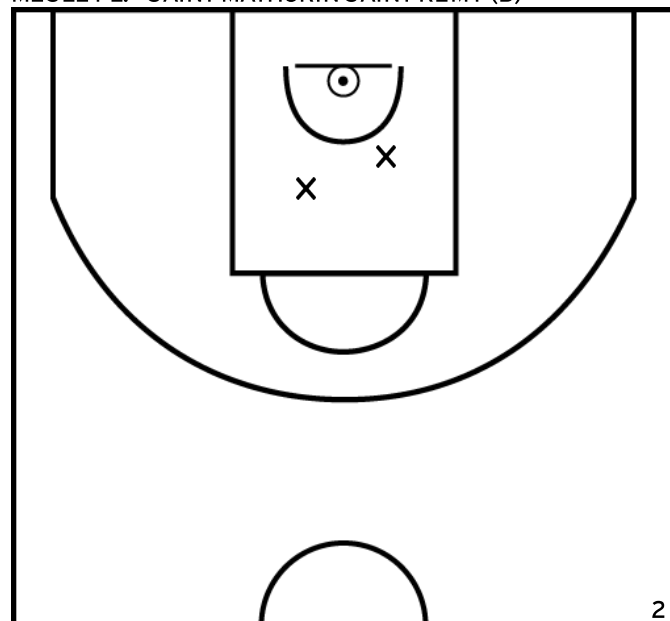
PÉRIODE 2



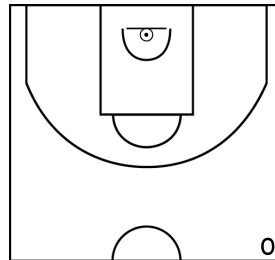
PÉRIODE 4



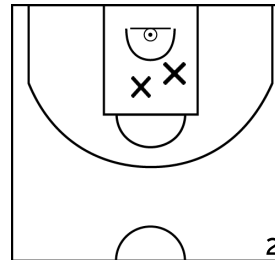
MESLET L. - SAINT MATHURIN SAINT REMY (B)



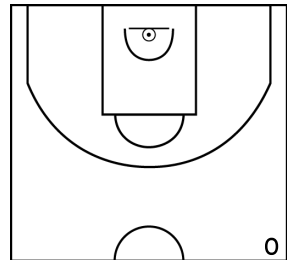
PÉRIODE 1



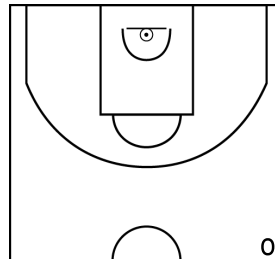
PÉRIODE 3



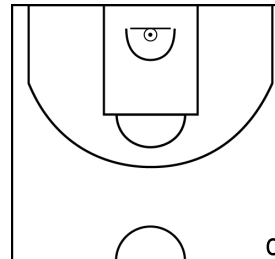
PROLONGATIONS



PÉRIODE 2



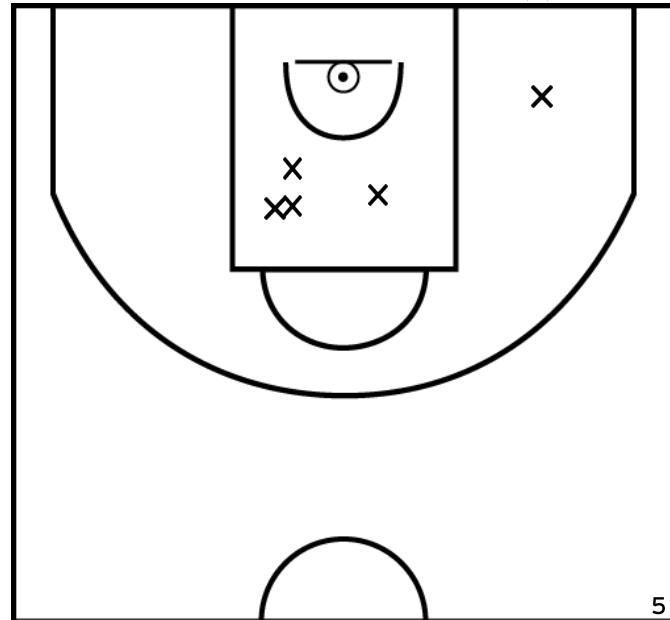
PÉRIODE 4



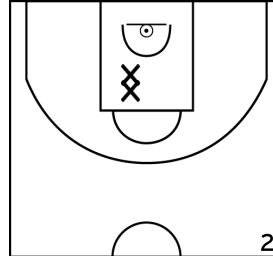
Rencontre: 7 Date: 25/09/22 Heure: 15:00

Arbitre: LAFFINEUR R GABORIEAU C

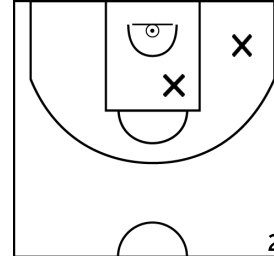
ROULLEAU A. - SAINT MATHURIN SAINT REMY (B)



PÉRIODE 1



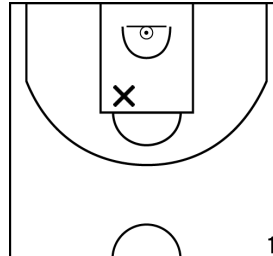
PÉRIODE 3



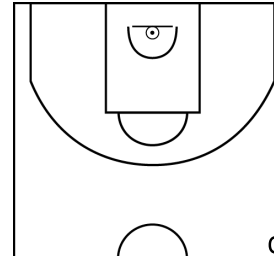
PROLONGATIONS



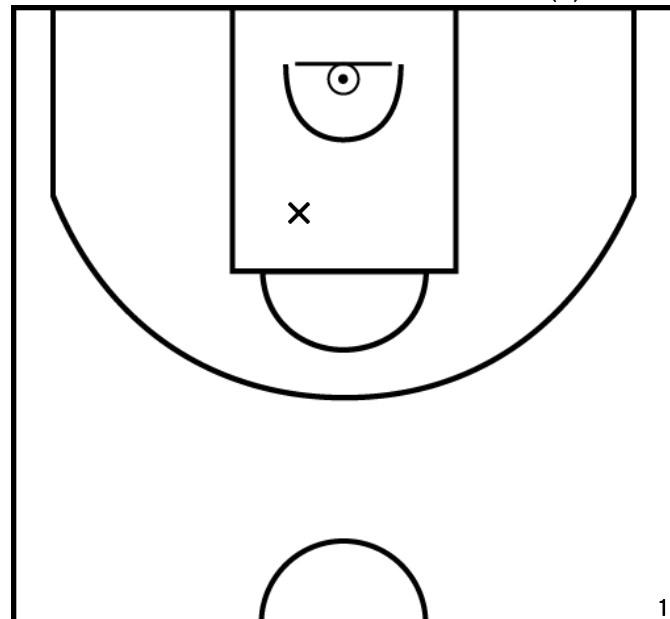
PÉRIODE 2



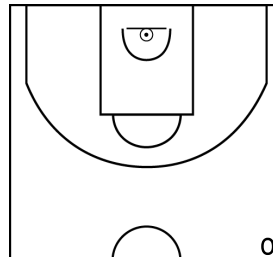
PÉRIODE 4



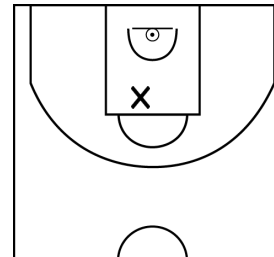
CHEVILLARD M. - SAINT MATHURIN SAINT REMY (B)



PÉRIODE 1



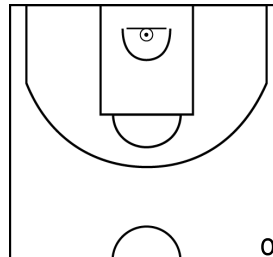
PÉRIODE 3



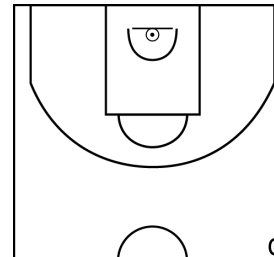
PROLONGATIONS



PÉRIODE 2

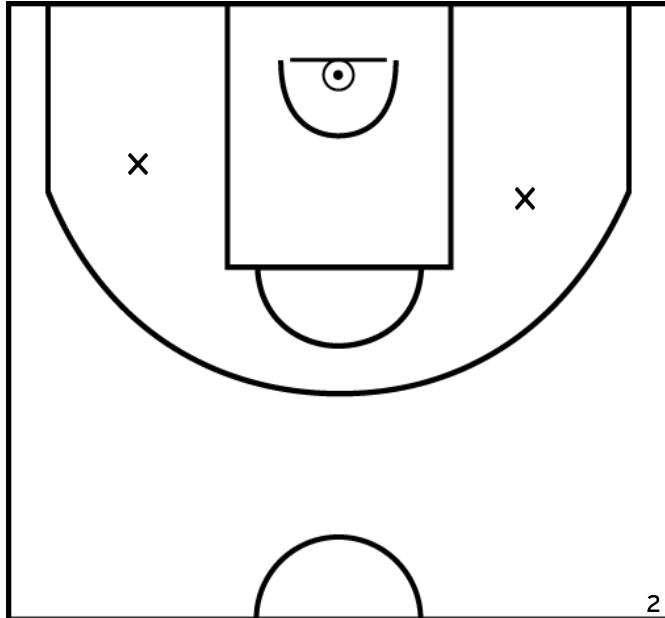


PÉRIODE 4

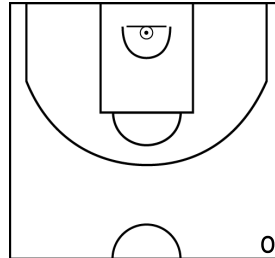


Rencontre: 7 Date: 25/09/22 Heure: 15:00
 Arbitre: LAFFINEUR R GABORIEAU C

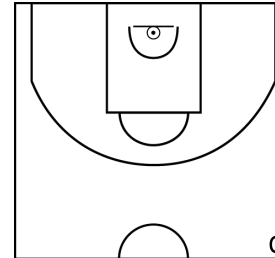
CAILLEAU M. - SAINT MATHURIN SAINT REMY (B)



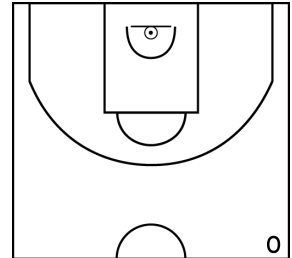
PÉRIODE 1



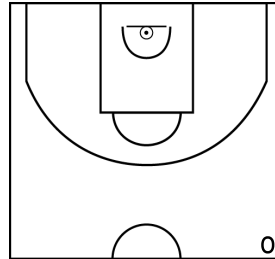
PÉRIODE 3



PROLONGATIONS



PÉRIODE 2



PÉRIODE 4

