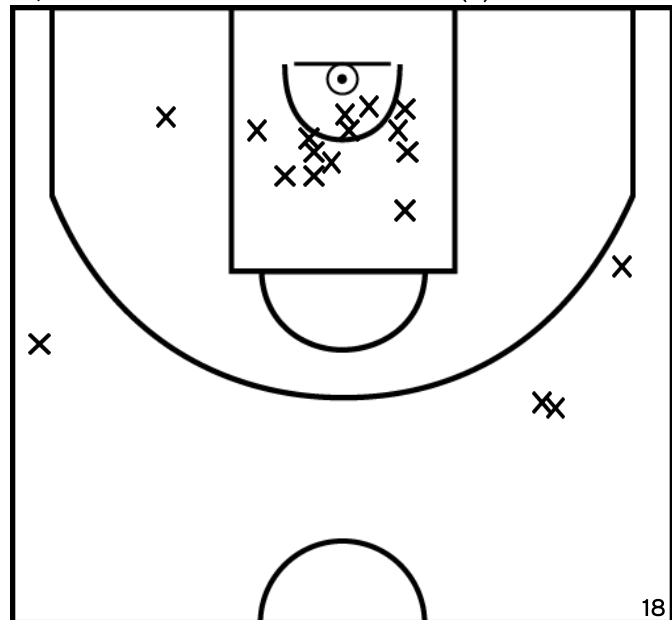


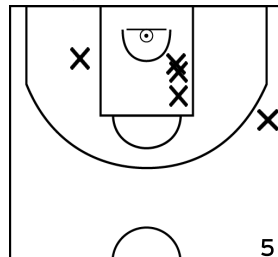
Rencontre: 9 Date: 06/11/22 Heure: 15:30

Arbitre: ARNOUX A LANDREAU M

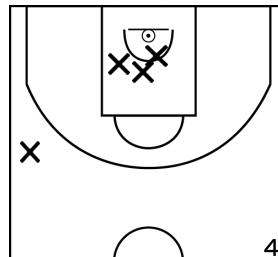
ÉQUIPE SAINT LEGER SOUS CHOLET - 2 (A)



PÉRIODE 1



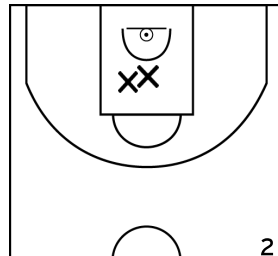
PÉRIODE 3



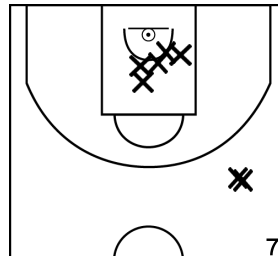
PROLONGATIONS



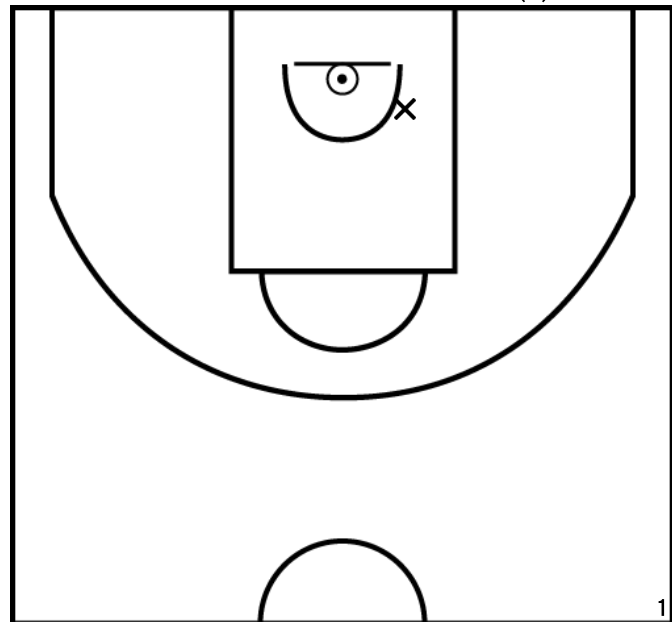
PÉRIODE 2



PÉRIODE 4



GOURDON T. - SAINT LEGER SOUS CHOLET - 2 (A)



PÉRIODE 1



PÉRIODE 3



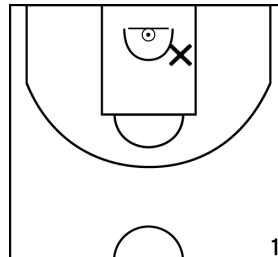
PROLONGATIONS



PÉRIODE 2



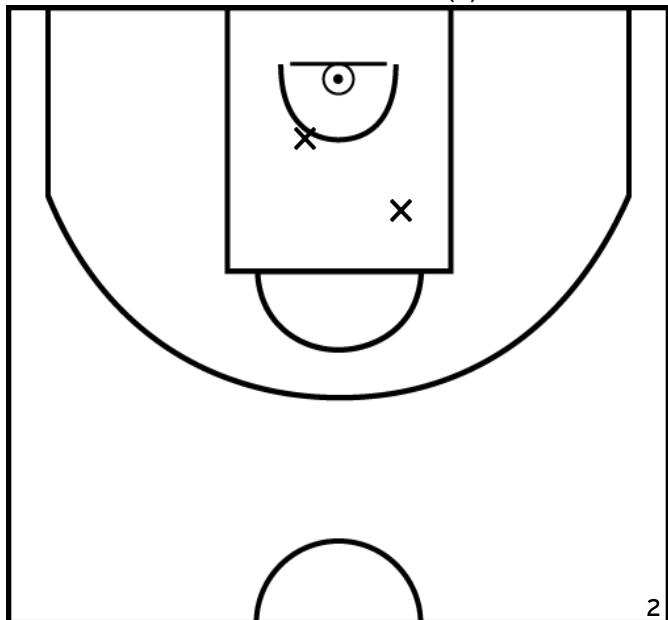
PÉRIODE 4



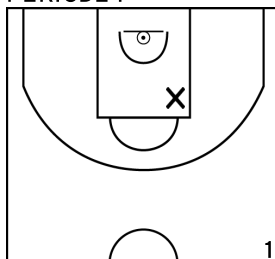
Rencontre: 9 Date: 06/11/22 Heure: 15:30

Arbitre: ARNOUX A LANDREAU M

ROI S. - SAINT LEGER SOUS CHOLET - 2 (A)



PÉRIODE 1



PÉRIODE 3



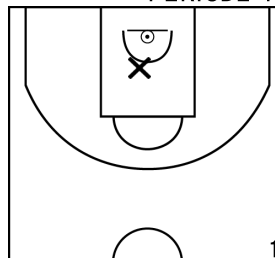
PROLONGATIONS



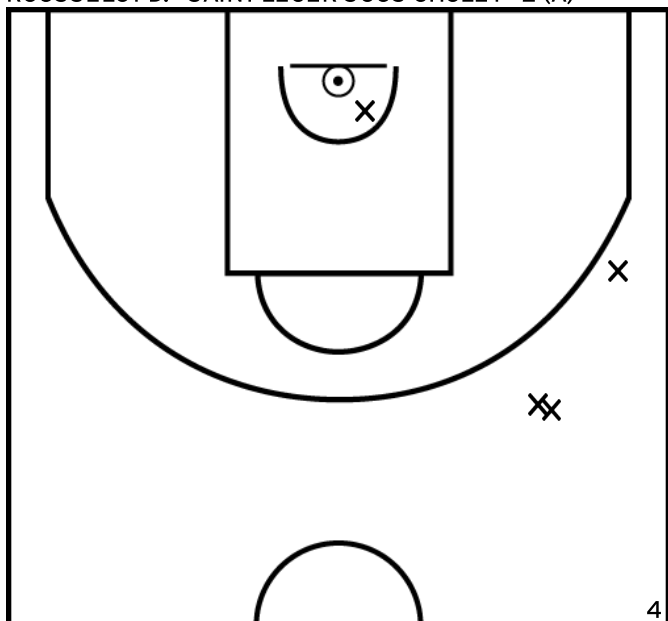
PÉRIODE 2



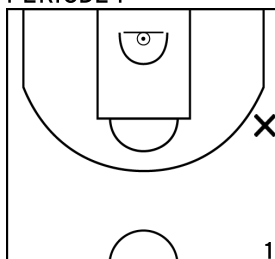
PÉRIODE 4



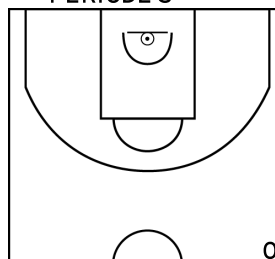
ROUSSELOT D. - SAINT LEGER SOUS CHOLET - 2 (A)



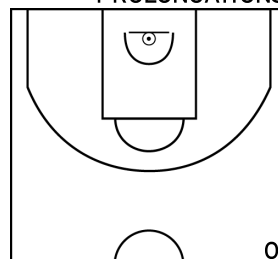
PÉRIODE 1



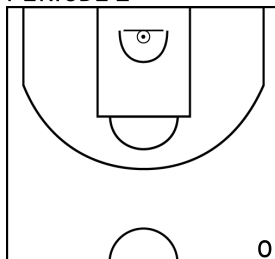
PÉRIODE 3



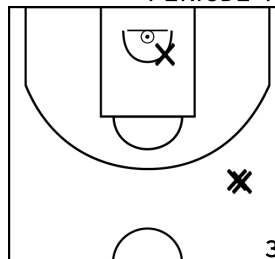
PROLONGATIONS



PÉRIODE 2



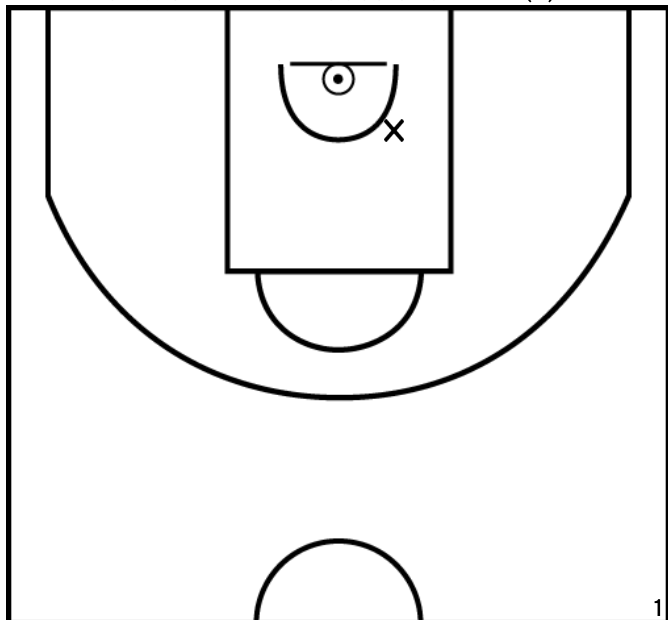
PÉRIODE 4



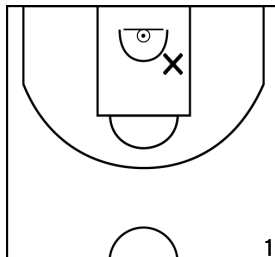
Rencontre: 9 Date: 06/11/22 Heure: 15:30

Arbitre: ARNOUX A LANDREAU M

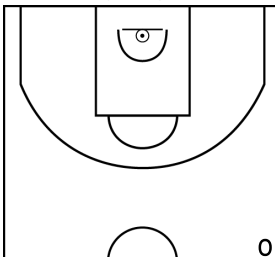
BLAITEAU M. - SAINT LEGER SOUS CHOLET - 2 (A)



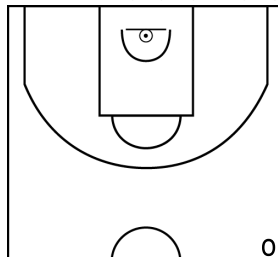
PÉRIODE 1



PÉRIODE 3



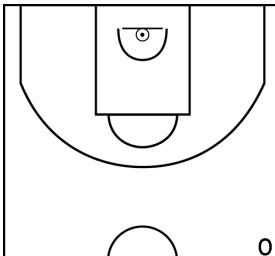
PROLONGATIONS



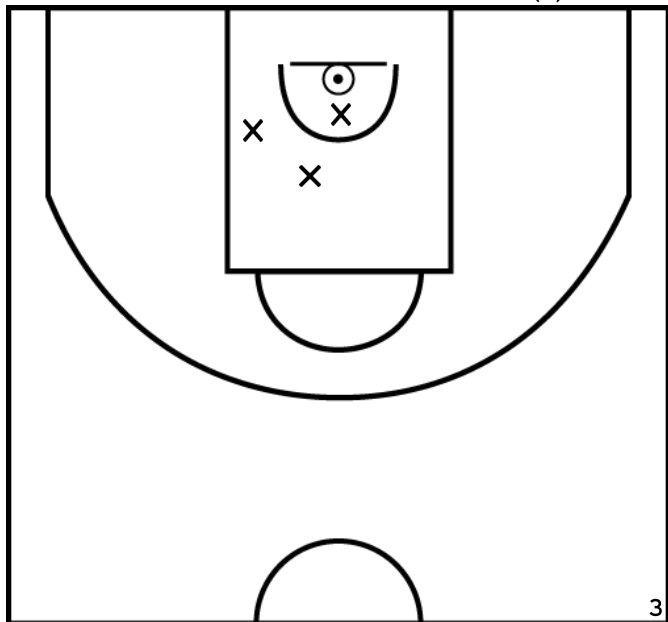
PÉRIODE 2



PÉRIODE 4



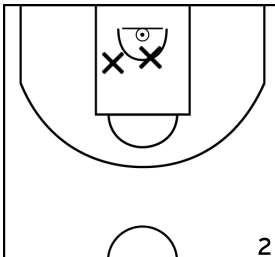
CHOUTEAU E. - SAINT LEGER SOUS CHOLET - 2 (A)



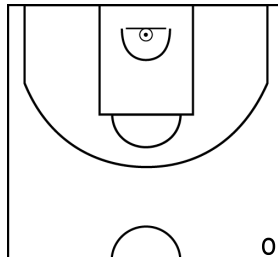
PÉRIODE 1



PÉRIODE 3



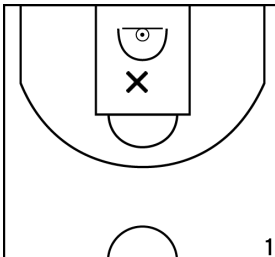
PROLONGATIONS



PÉRIODE 2



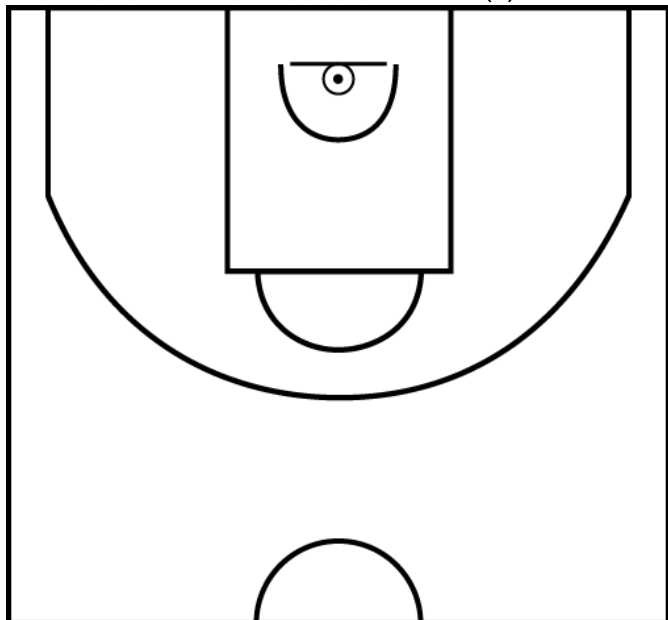
PÉRIODE 4



Rencontre: 9 Date: 06/11/22 Heure: 15:30

Arbitre: ARNOUX A LANDREAU M

BÂCLE O. - SAINT LEGER SOUS CHOLET - 2 (A)



PÉRIODE 1



PÉRIODE 3



PROLONGATIONS



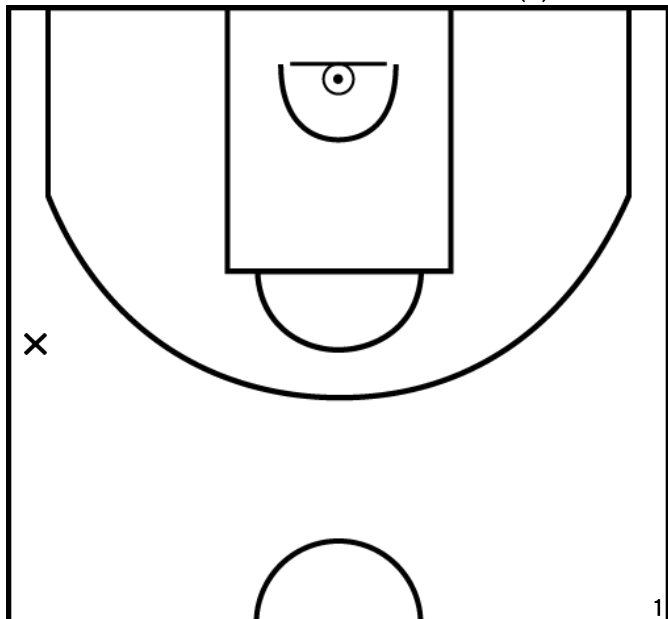
PÉRIODE 2



PÉRIODE 4



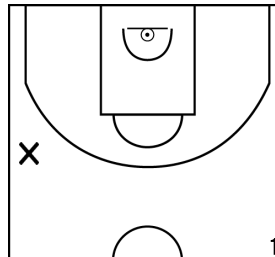
BLAITEAU Y. - SAINT LEGER SOUS CHOLET - 2 (A)



PÉRIODE 1



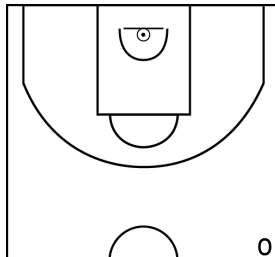
PÉRIODE 3



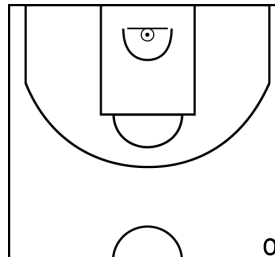
PROLONGATIONS



PÉRIODE 2



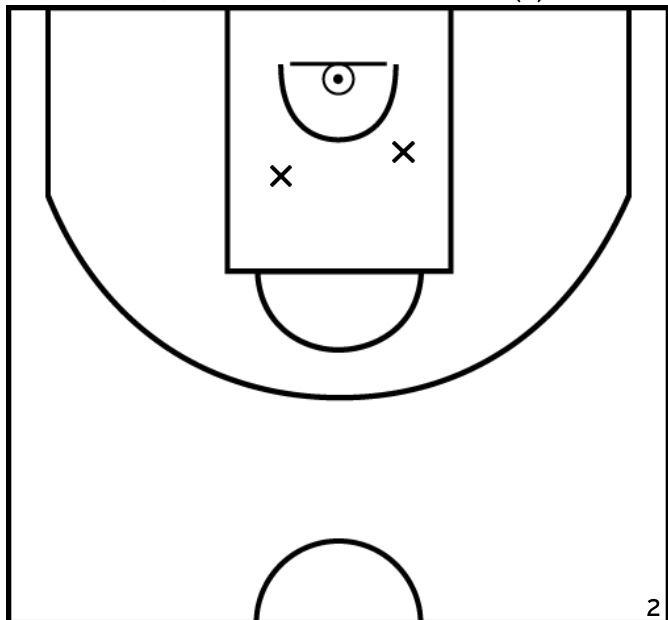
PÉRIODE 4



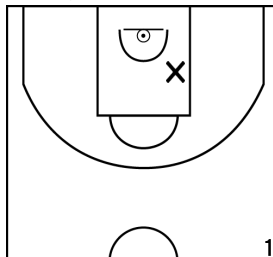
Rencontre: 9 Date: 06/11/22 Heure: 15:30

Arbitre: ARNOUX A LANDREAU M

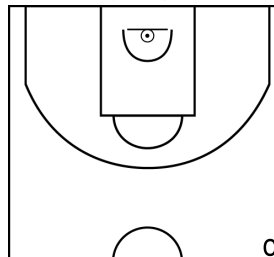
UZUREAU T. - SAINT LEGER SOUS CHOLET - 2 (A)



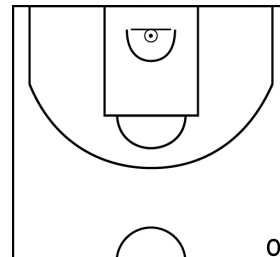
PÉRIODE 1



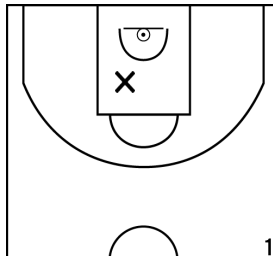
PÉRIODE 3



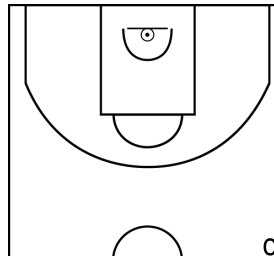
PROLONGATIONS



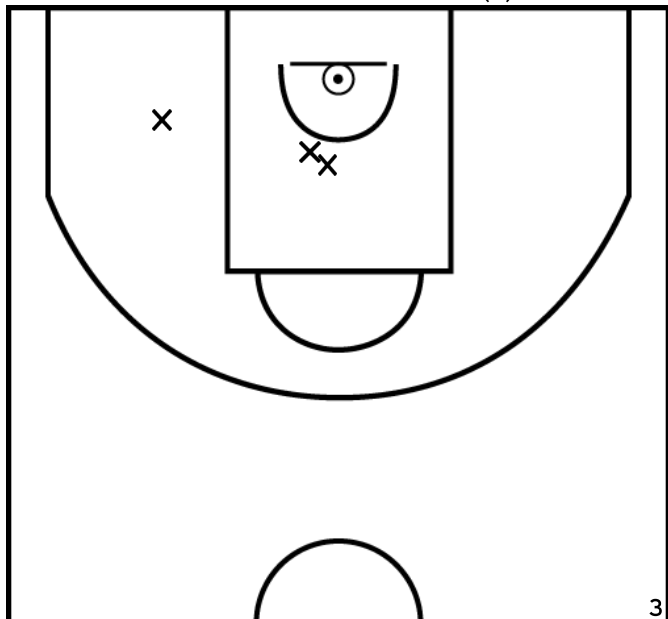
PÉRIODE 2



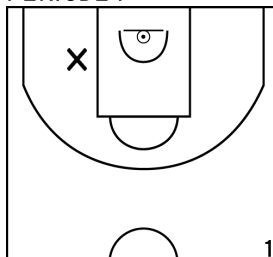
PÉRIODE 4



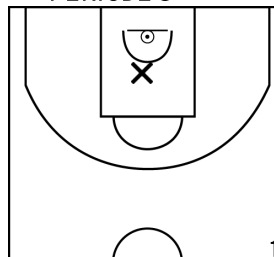
LEMER T. - SAINT LEGER SOUS CHOLET - 2 (A)



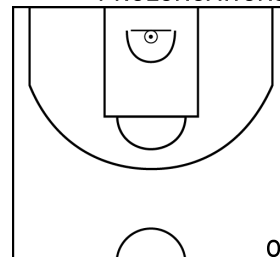
PÉRIODE 1



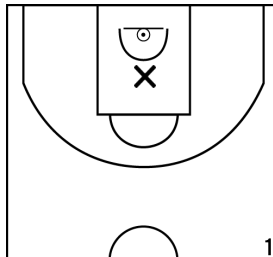
PÉRIODE 3



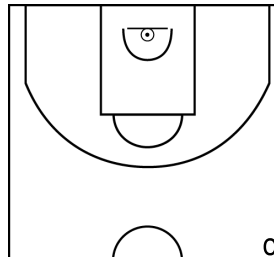
PROLONGATIONS



PÉRIODE 2



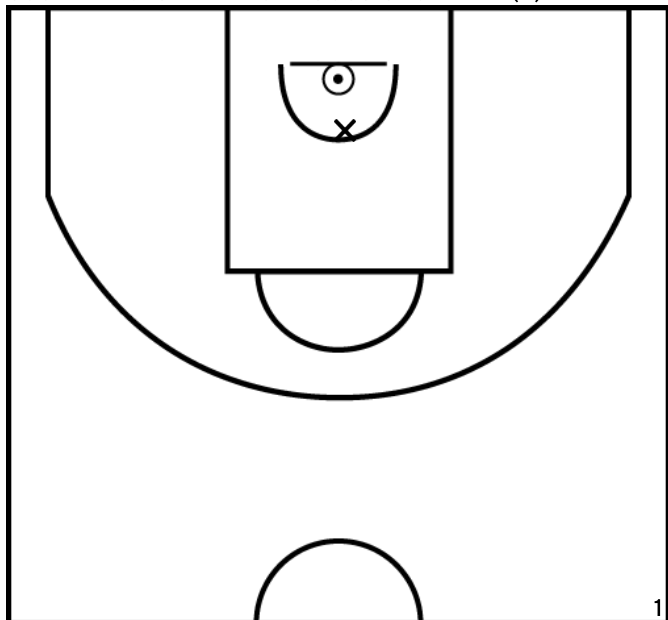
PÉRIODE 4



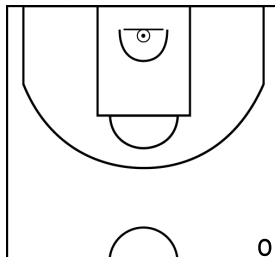
Rencontre: 9 Date: 06/11/22 Heure: 15:30

Arbitre: ARNOUX A LANDREAU M

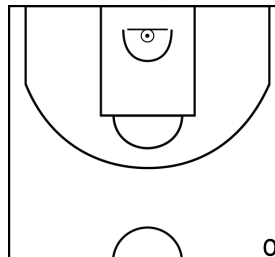
COURTAY A. - SAINT LEGER SOUS CHOLET - 2 (A)



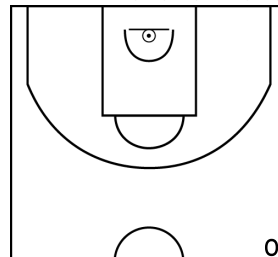
PÉRIODE 1



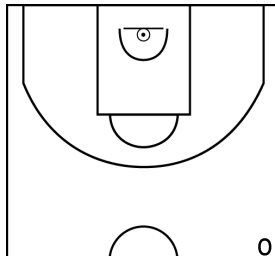
PÉRIODE 3



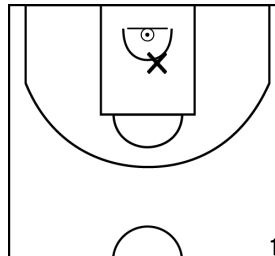
PROLONGATIONS



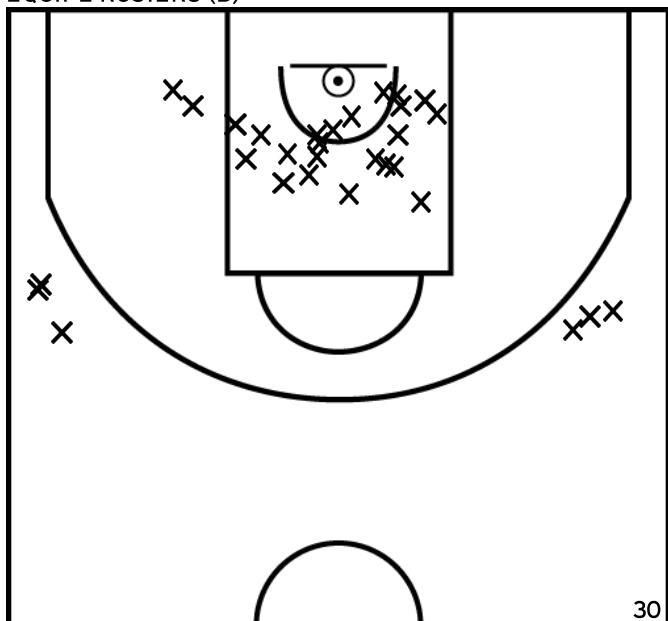
PÉRIODE 2



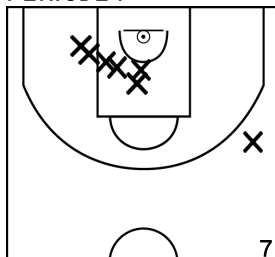
PÉRIODE 4



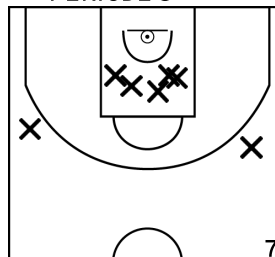
ÉQUIPE ROSIERS (B)



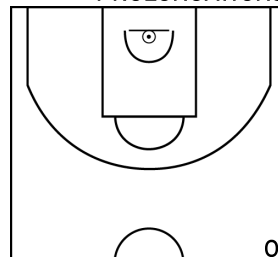
PÉRIODE 1



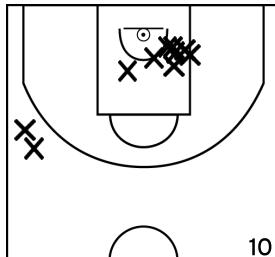
PÉRIODE 3



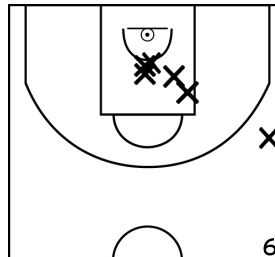
PROLONGATIONS



PÉRIODE 2



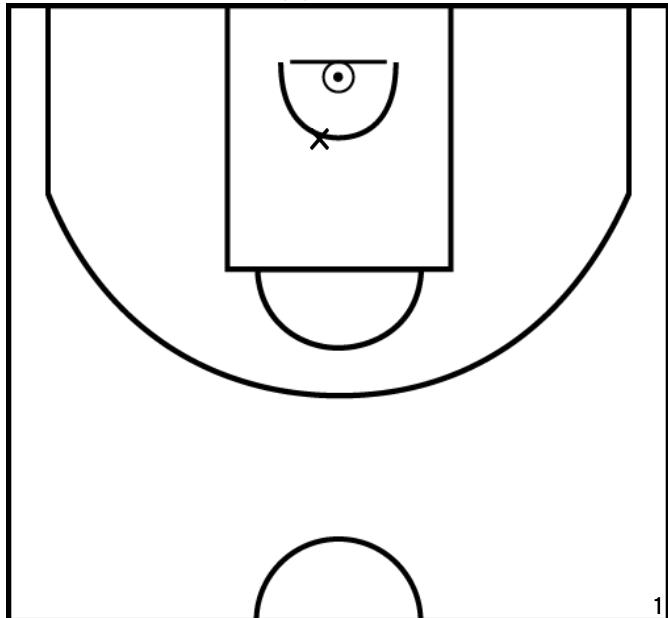
PÉRIODE 4



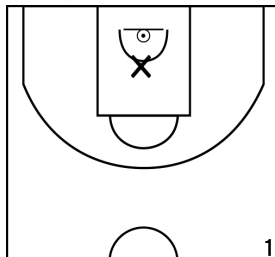
Rencontre: 9 Date: 06/11/22 Heure: 15:30

Arbitre: ARNOUX A LANDREAU M

RABINEAU N. - ROSIERS (B)



PÉRIODE 1



PÉRIODE 3



PROLONGATIONS



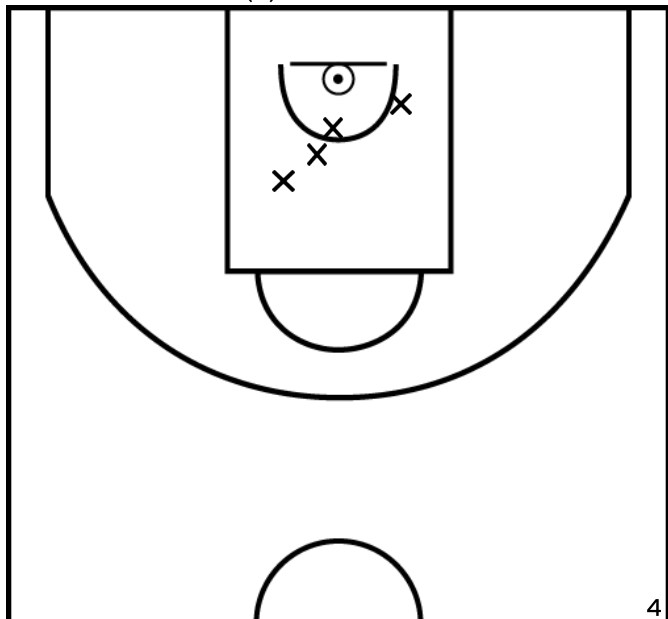
PÉRIODE 2



PÉRIODE 4



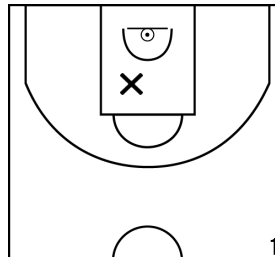
MARTIN L. - ROSIERS (B)



PÉRIODE 1



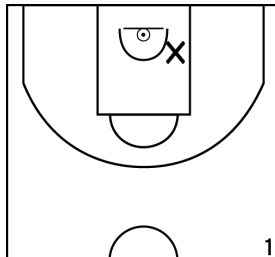
PÉRIODE 3



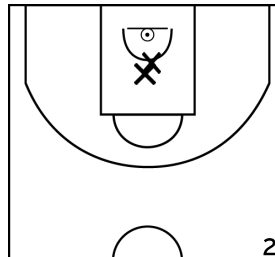
PROLONGATIONS



PÉRIODE 2



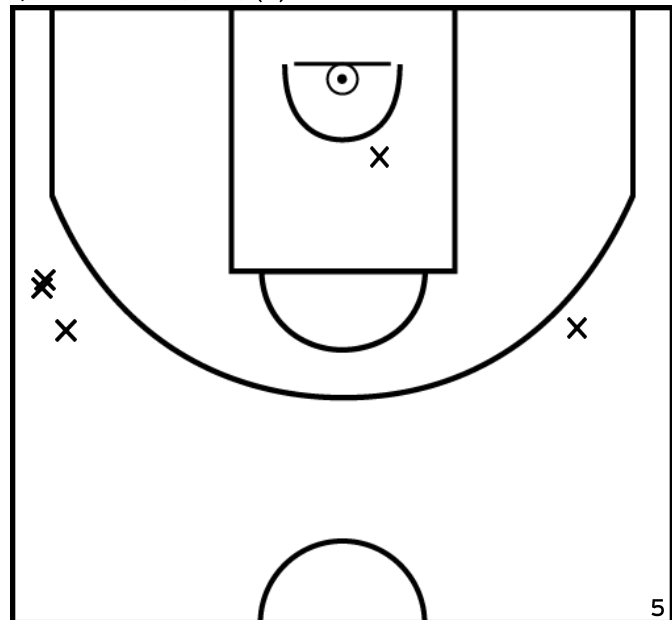
PÉRIODE 4



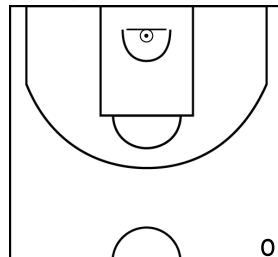
Rencontre: 9 Date: 06/11/22 Heure: 15:30

Arbitre: ARNOUX A LANDREAU M

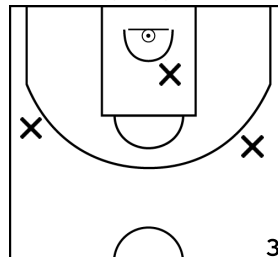
QUELEN V. - ROSIERS (B)



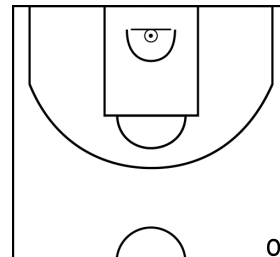
PÉRIODE 1



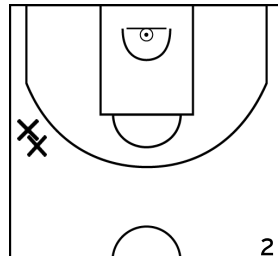
PÉRIODE 3



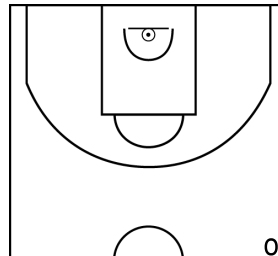
PROLONGATIONS



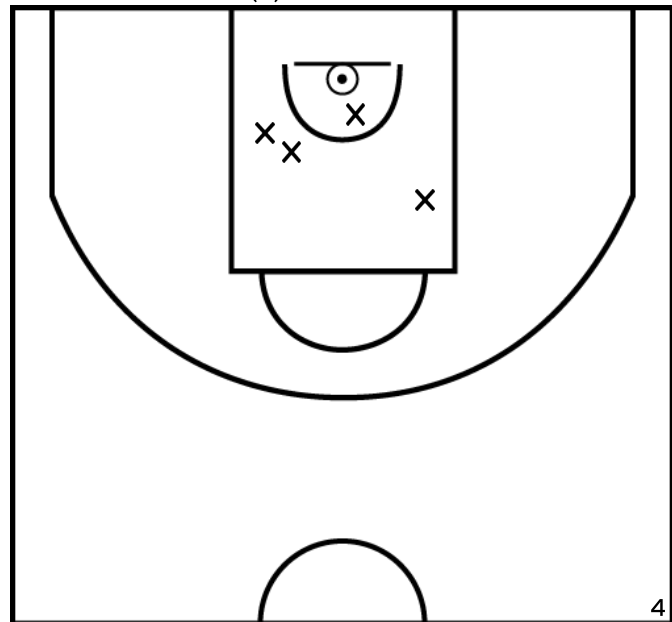
PÉRIODE 2



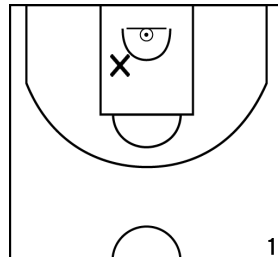
PÉRIODE 4



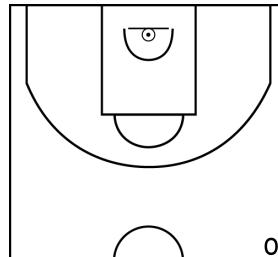
VALLEE L. - ROSIERS (B)



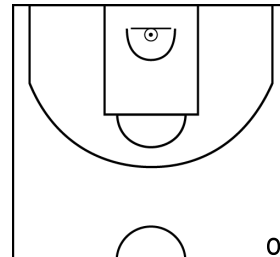
PÉRIODE 1



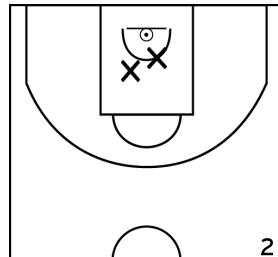
PÉRIODE 3



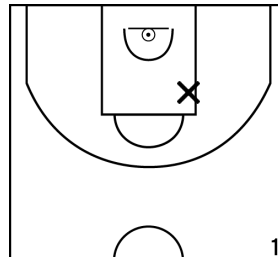
PROLONGATIONS



PÉRIODE 2



PÉRIODE 4

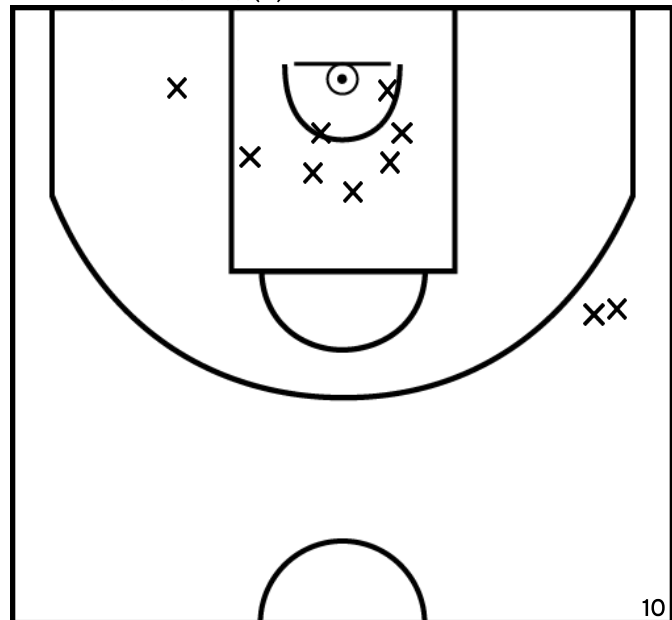




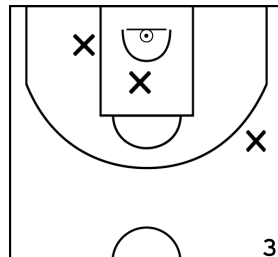
Rencontre: 9 Date: 06/11/22 Heure: 15:30

Arbitre: ARNOUX A LANDREAU M

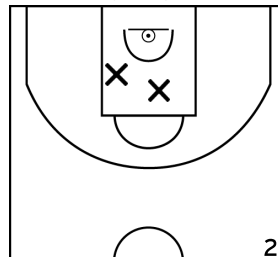
VALLEE C. - ROSIERS (B)



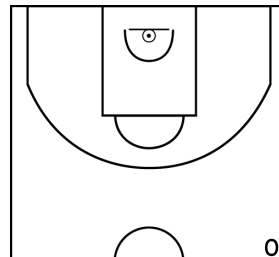
PÉRIODE 1



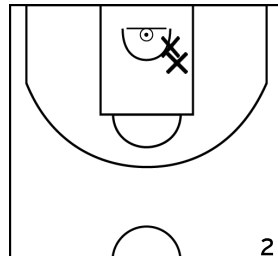
PÉRIODE 3



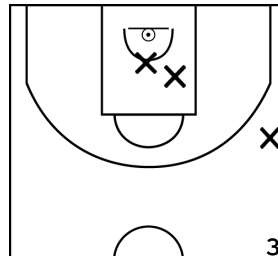
PROLONGATIONS



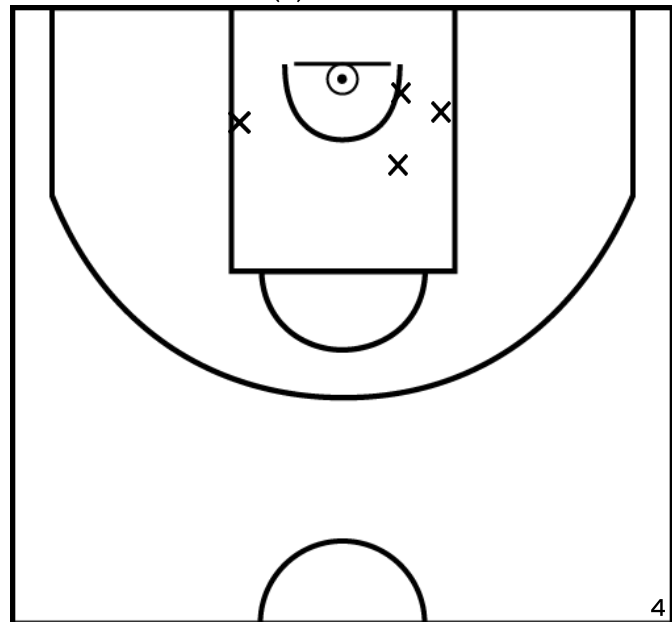
PÉRIODE 2



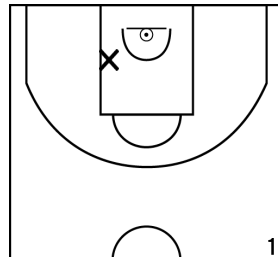
PÉRIODE 4



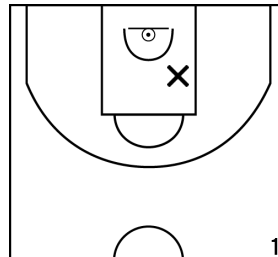
BESNARD Y. - ROSIERS (B)



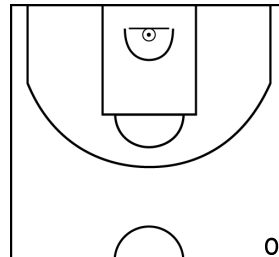
PÉRIODE 1



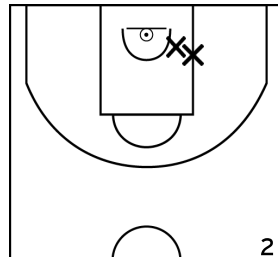
PÉRIODE 3



PROLONGATIONS



PÉRIODE 2



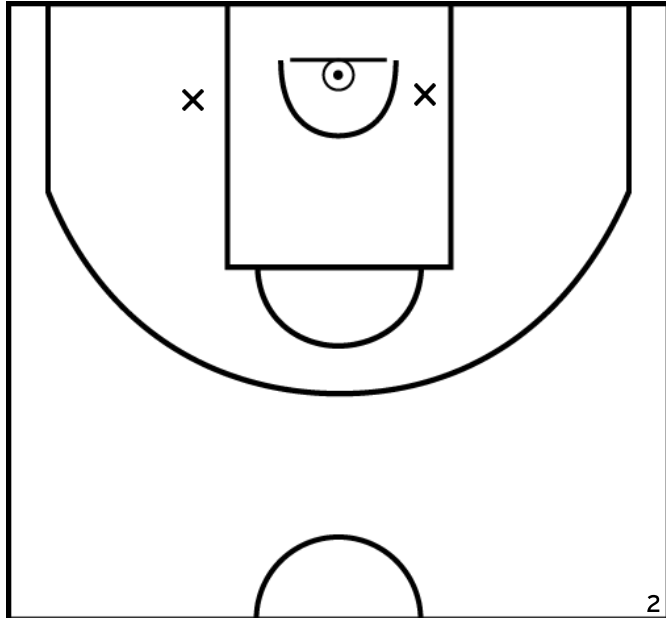
PÉRIODE 4



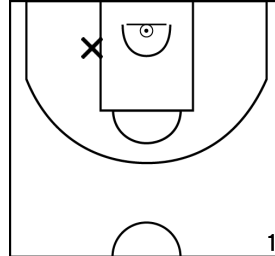
Rencontre: 9 Date: 06/11/22 Heure: 15:30

Arbitre: ARNOUX A LANDREAU M

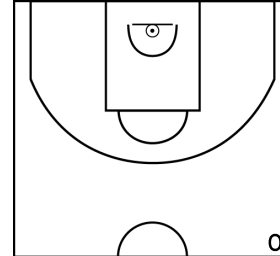
RIVIER B. - ROSIERS (B)



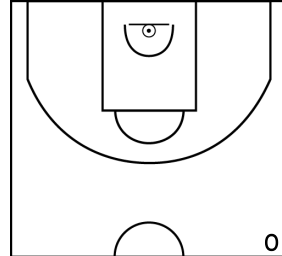
PÉRIODE 1



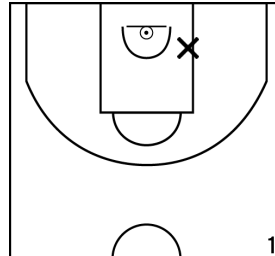
PÉRIODE 3



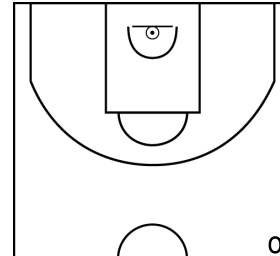
PROLONGATIONS



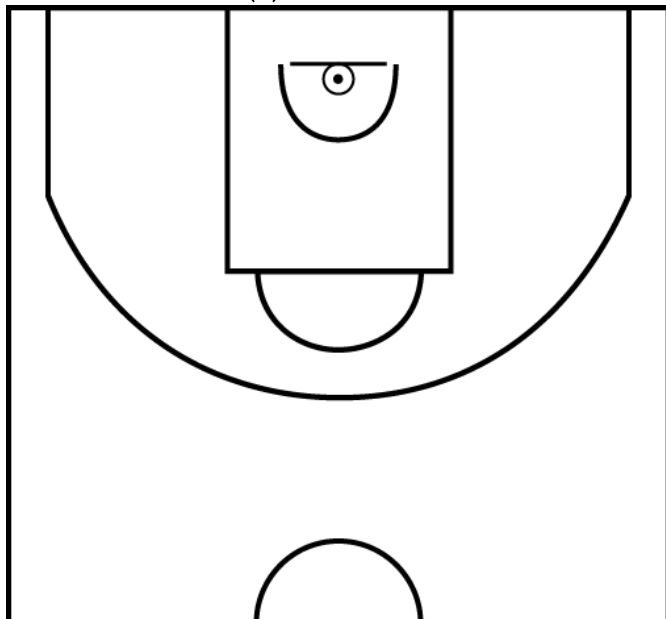
PÉRIODE 2



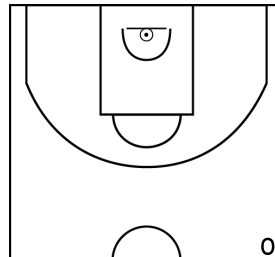
PÉRIODE 4



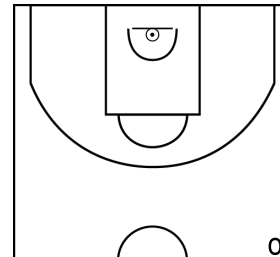
MARTIN H. - ROSIERS (B)



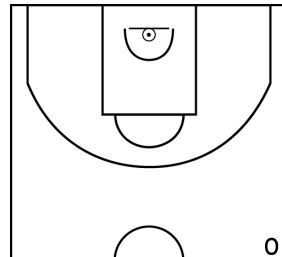
PÉRIODE 1



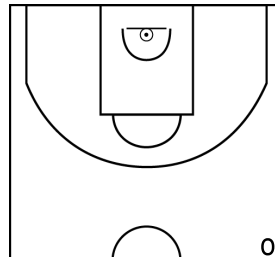
PÉRIODE 3



PROLONGATIONS



PÉRIODE 2



PÉRIODE 4

